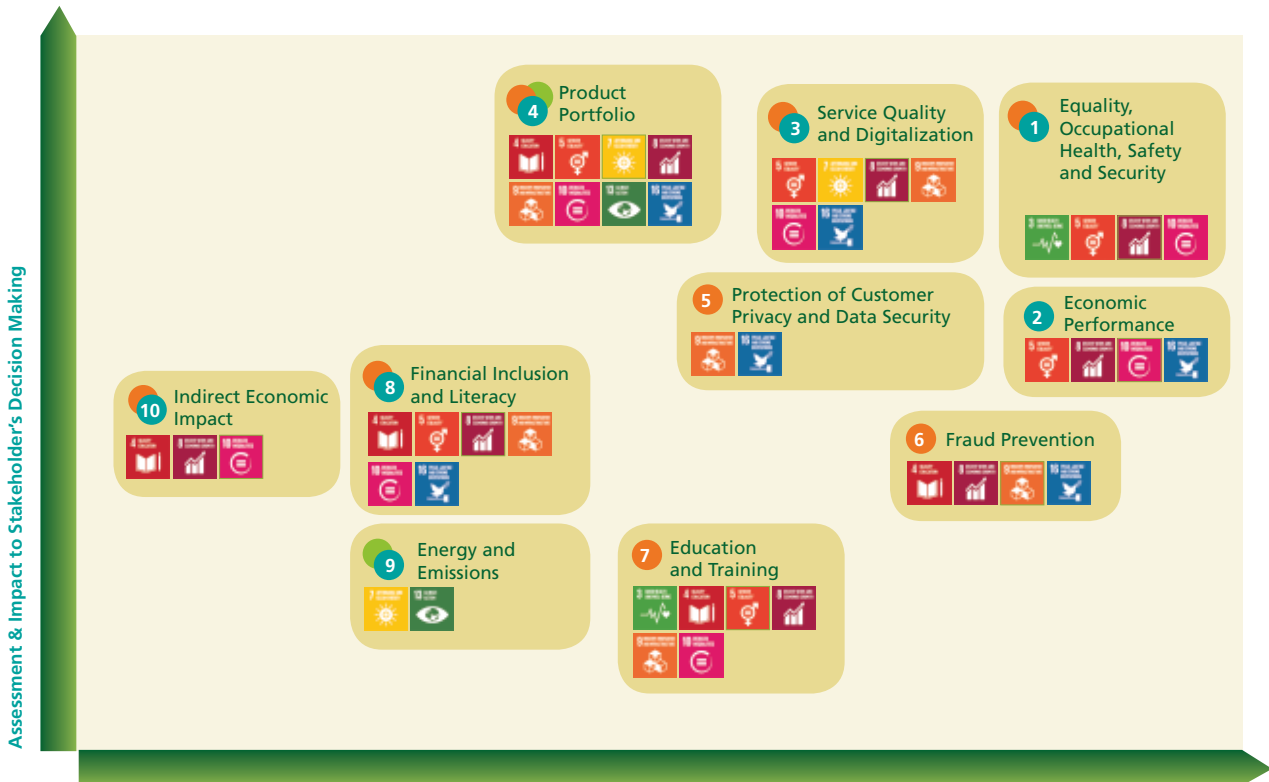




Material Topics Matrix [102-47]

Materiality matrix and contribution to SDGs



Significant Impact to Economic, Environmental, & Social Aspects

● Social Performance ● Economic Performance ● Environmental Performance

Report Content Scope [102-45]

All data and information presented in the sustainability report were derived from internal data after validation by the relevant work units. Specifically for financial information, the data source was taken from the consolidated financial statements and covers all subsidiaries. The subsidiaries are PT BCA Finance, BCA Finance Limited, PT Bank BCA Syariah, PT BCA Sekuritas, PT BCA Multi Finance, PT Asuransi Umum BCA (BCA Insurance), PT Asuransi Jiwa BCA (BCA Life), PT Central Capital Ventura (CCV), and PT Bank Digital BCA (BCA Digital). Apart from financial data, other data was derived from BCA as the parent company.

Report Changes and Information Restatements [102-48, 102-49]

There were no significant changes in this report, such as changes in the reporting period, the scope of information, or the reporting cycle. However, we analyzed the material topics and there is a position change in material topics from the previous year.

Equality, Health, Safety, and Occupational Security (EHSOS) became the main material topics based on the 2020 conditions, when the COVID-19 pandemic occurred. These topics highlight how BCA prioritizes its employees' and customers' health conditions during the pandemic. BCA realizes that none of its activities can be carried out without supporting good health. For this reason, the efforts taken to control and break the spread of the COVID-19 virus are delivered more comprehensively in this report, without reducing the other information needed by stakeholders. In this report, there are several significant data restatements of information reported in the previous report. The data restatements are due to adjustments in data coverage and changes in calculation methods.